

005534

RECEIVED  
LARAMIE COUNTY  
CHEYENNE, WY.

CERTIFIED LAND CORNER RECORDATION

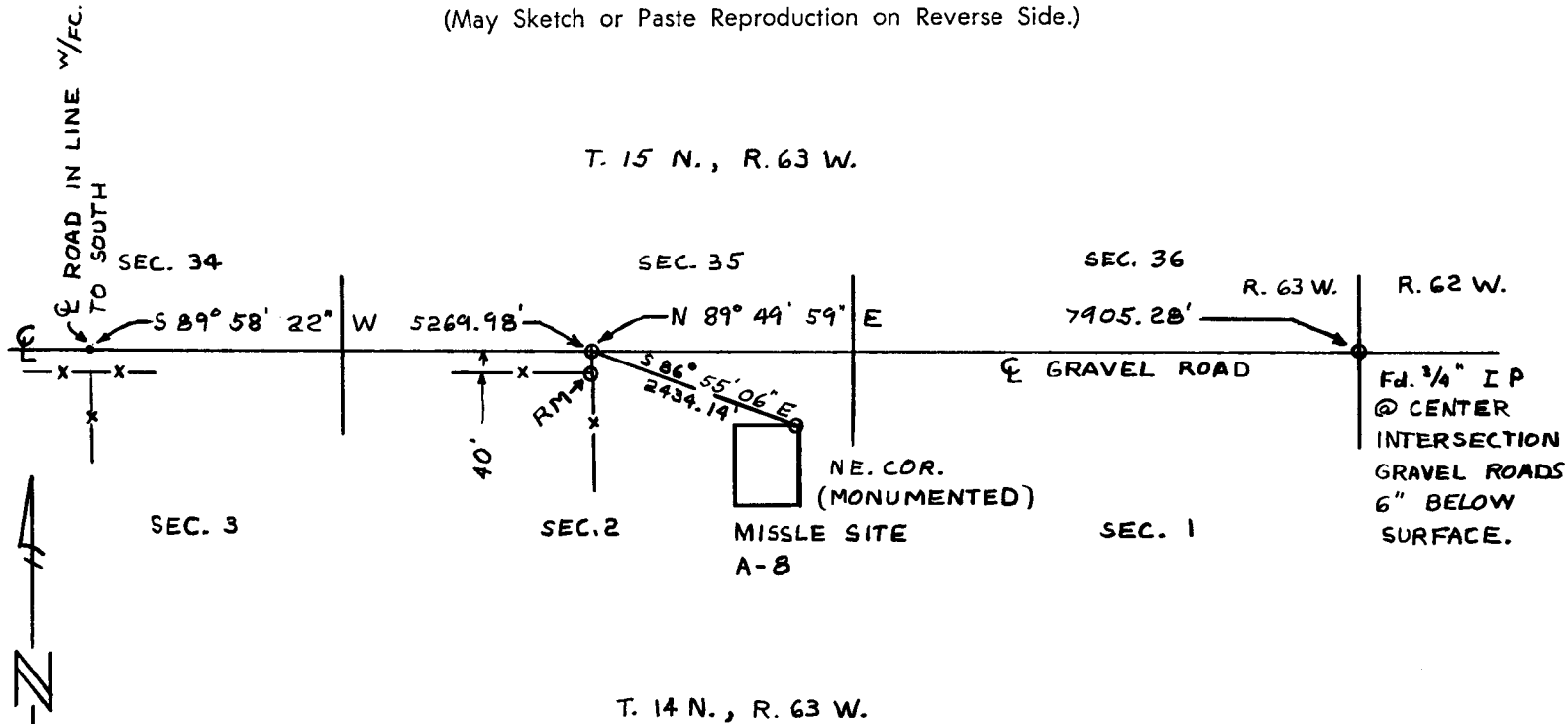
DESCRIPTION OF CORNER EVIDENCE FOUND, AND ORIGINAL RECORD (if known) **185 FEB 21 PM 3 42**

The 1/4 section corner of Sections 2 and 35, Ts.14 and 15N., R.63W., Laramie County, Wyoming, determined from local control in line with fence to South, (40'N. of fence corner) and on centerline E.-W. gravel road

DESCRIPTION OF MONUMENT AND ACCESSORIES ESTABLISHED TO PERPETUATE THE ORIGINAL LOCATION OF THIS CORNER:

Set a No. 5 rebar, 4" below surface of road at the point for the corner; from which;  
Set a No. 5 rebar for a reference monument, bears S0°25'E., 40.00 feet distant with alum cap marked 40.00 feet and an arrow pointing toward the corner.

SKETCH, WITH COURSE AND DISTANCE TO ADJACENT CORNER IF DETERMINED IN THIS SURVEY. (May Sketch or Paste Reproduction on Reverse Side.)



Bearings determined by Solar Observation

I, Jeffrey D. Youngquist certify that I have carefully performed or reviewed the work done on the diagrammed corner as reported on this recordation form, and approve the same.

Jeffrey D. Youngquist Signature of Surveyor  
Registration No. RLS 3515

STATE OF WYOMING,  
Office of Clerk and Recorder,  
County of Laramie

This "corner record" was filed for record on the 21 day of Feb, 1980, was noted on the cross-index plat and is assigned page No. \_\_\_\_\_, in book No. \_\_\_\_\_.

Frank C. Whitehead  
County Official  
Cross Index No. A-19 T. 14 R. 63 Mer.  
\_\_\_\_ T. \_\_\_\_\_ R. \_\_\_\_\_ Mer.  
\_\_\_\_ T. \_\_\_\_\_ R. \_\_\_\_\_ Mer.  
\_\_\_\_ T. \_\_\_\_\_ R. \_\_\_\_\_ Mer.  
\_\_\_\_ T. \_\_\_\_\_ R. \_\_\_\_\_ Mer.  
\_\_\_\_ T. \_\_\_\_\_ R. \_\_\_\_\_ Mer.  
\_\_\_\_ T. \_\_\_\_\_ R. \_\_\_\_\_ Mer.

BOOK 1224  
A-19 14-63  
2-19 15-63  
1286